



**Friends of Somerset County Library**

6022 Glades Pike, Suite 120

Somerset, PA 15501

# Membership Form

Please print the following information:

Name: \_\_\_\_\_

Address: \_\_\_\_\_

\_\_\_\_\_

Phone: (H) \_\_\_\_\_ (C) \_\_\_\_\_

E-mail: \_\_\_\_\_

( ) New Member ( ) Renewal

Is this a change of address? ( ) Yes ( ) No

I am interested in helping with:

\_\_\_\_\_ Programs

\_\_\_\_\_ Book Sales

\_\_\_\_\_ Fundraising activities

\_\_\_\_\_ Creating brochures, handouts or familiar with publishing programs

\_\_\_\_\_ Being an officer

\_\_\_\_\_ Other \_\_\_\_\_

\_\_\_\_\_

Please select one:

Type of Membership	Annual Dues
( ) Student	\$5.00
( ) Individual	\$10.00
( ) Family	\$15.00
( ) Sponsor	\$100.00
( ) Super Friend	\$250.00

Please make checks payable to:

Friends of Somerset County Library

Please return membership form to:

Friends of Somerset County Library

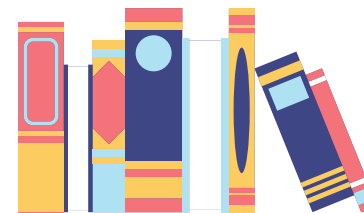
6022 Glades Pike, Ste 120

Somerset, PA 15501

*Thank you for being a friend!*



**The Somerset County  
Library  
needs friends like you!**



**Support your library by  
joining Friends of  
Somerset County Library**

## Friends of the Library...

- heighten public awareness of the services of the library for both children and adults
- create support for expanding county library programs
- encourage gifts, endowments and memorials to the library
- provide volunteer hours and programs



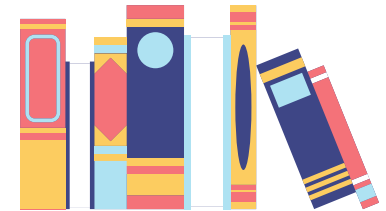
*Who are Friends of the Library?*

*They are people like you who know that a community with a first rate library is a better place to live.*



*Do you have talents you can donate to the library?*

We endeavor to foster a positive relationship between the library staff and the community it serves; to increase the use of the library; to fund and help run library programs of interest to the community; and to help acquire funds for the purchase of library materials and improvements. We support and assist the library staff when requested. We wish to help our library grow and expand to meet the needs of our growing community.



Some of the ways the Friends have supported the library are:

- through the Friends Cafe
- helping pay for finishing touches to library renovations
- purchasing bags and candy to pass out at the Halloween parade
- providing support during programming

<http://somersecolibrary.org/friend>

 FriendsofSomersetCL